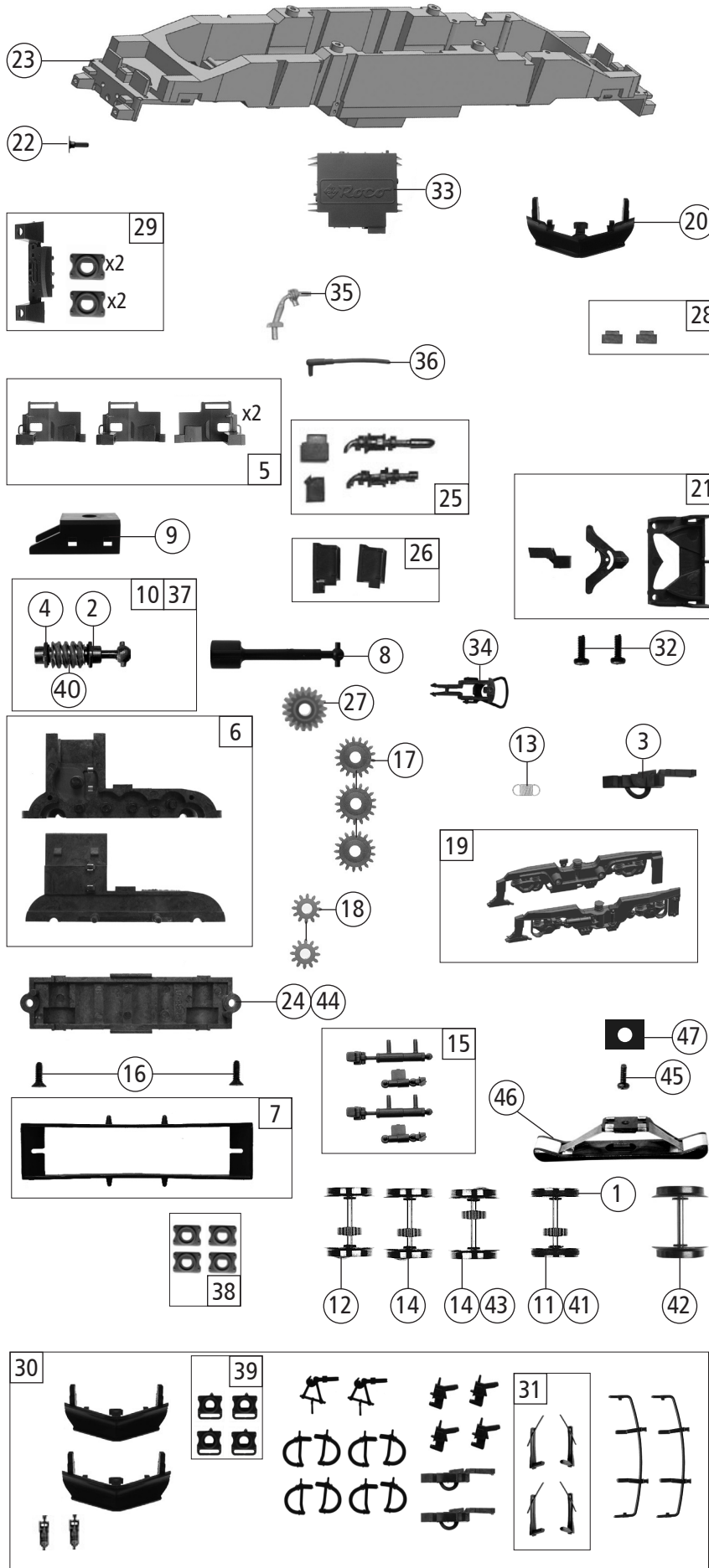


| Pos. Nr.<br>Pos.no. | Beschreibung<br>Description  | Art.-Nr.<br>Art.no. | Preisgruppe<br>Price bracket |
|---------------------|--|---------------------|------------------------------|
| 70524               | EVB Br 182   | =                   |                              |
| 70525               |  | =                   | 🔊                            |
| 78525               |  | ~                   | 🔊                            |
| 1                   | Gehäuse komplett Betr.Nr. 182 912-6<br>Body ass. compl. loco no. 182 912-6 | 149308              | 37                           |
| 2                   | Motor<br>Motor   | 146020              | 25                           |
| 3                   | Kardanschale kurz 1,5 mm<br>Cardan reception, short                        | 87129               | 4                            |
| 4                   | Griffstange<br>Handrail  | 110490              | 6                            |
| 5                   | Hauptschalter<br>Main switch   | 110493              | 4                            |
| 6                   | Stützisolator<br>Supporting isolator                                       | 110494              | 3                            |
| 7                   | Überspanungsableiter<br>Surge arrester                                     | 110496              | 3                            |
| 8                   | Dachleitung<br>Roof wiring   | 110498              | 6                            |
| 9                   | Isolatorenverbindung<br>Isolator connection                                | 110499              | 3                            |
| 10                  | Führerstand<br>Driver's cab  | 111973              | 6                            |
| 11                  | Steuerungskasten<br>Reversing gear box                                     | 112852              | 3                            |
| 12                  | Motordämpfer<br>Motor silencer   | 113376              | 4                            |
| 13                  | Oberspannungswandler<br>Surge transducer                                   | 115738              | 3                            |
| 14                  | TS - Lautsprecherbox und Halter<br>Part set - loudspeaker box and holder   | 135884              | 9                            |
| 15                  | TS - Isolatoren<br>Part set - Isolators                                    | 115978              | 7                            |
| 16                  | GF - Schraube M 2x5 mm<br>Self-tapping screw                               | 114966              | 3                            |
| 17                  | TS - für Pufferbrüst für Betrieb<br>Part set buffer beam for service       | 127630              | 4                            |
| 18                  | Brückenstecker<br>Jumper   | 133241              | 10                           |
| 19                  | Handgriff Gehäuse seitlich<br>Lateral body handrail                        | 122967              | 3                            |
| 20                  | TS - Lichtleiter<br>Part set light conductor                               | 129664              | 6                            |
| 21                  | TS - Lichtabdeckung<br>Part set light cover                                | 144075              | 6                            |
| 22                  | Platine kpl. PLUX 22<br>PCB complete                                       | 146019              | 23                           |
| 23                  | TS - Gehäuse lackiert<br>Part set body painted                             | 129673              | 6                            |
| 24                  | Dach<br>Roof   | 137394              | 6                            |
| 25                  | GF-Schraube M1,6x6 mm<br>Self-tapping screw                                | 114836              | 3                            |
| 26                  | TS - Fenster und Lichtleiter<br>Part set of window and light conductor     | 129981              | 12                           |
| 27                  | Frontgriffstange<br>Front handrail   | 130035              | 4                            |
| 28                  | Stromabnehmer<br>Pantograph  | 85353               | 19                           |
| 29                  | Lokführer<br>Loco driver   | 110407              | 6                            |
| 30                  | Motorkontaktfeder D=2,4 L=14,3 mm<br>Motor contact spring                  | 145560              | 4                            |
| 31                  | Motorkontaktfeder D=2,4 L=7,15 mm<br>Motor contact spring                  | 145561              | 4                            |
| 32                  | Motorritanzrahmen<br>Motor spacing frame                                   | 146021              | 5                            |
| <b>Sound</b>        |  |                     |                              |
| 33                  | Sounddecoder<br>Sound-decoder  | 147377              | 39                           |
| 34                  | Lautsprecher<br>Loudspeaker  | 129524              | 13                           |
| 35                  | Platine mit LED-Platine<br>Printed circuit board with LED-PCB              | 146027              | 23                           |



| Pos. Nr.<br>Pos.no.    | Beschreibung<br>Description   | Art.-Nr.<br>Art.no. | Preisgruppe<br>Price bracket |
|------------------------|---|---------------------|------------------------------|
| 70524                  | EVB Br 182  | =                   |                              |
| 70525                  |   | =                   | 🔊                            |
| 78525                  |   | ~                   | 🔊                            |
| 1                      | Hafringsatz 12,5-13,8mm<br>Set with traction tyres                                  | 40066               | ---                          |
| 2                      | Beilagscheibe 2,1x4/0,2 mm<br>Washer  | 86108               | 3                            |
| 3                      | Kurzkupplung<br>Shortcoupling   | 115550              | 6                            |
| 4                      | Lager für Schneckenachse<br>Bearing for worm gear axle                              | 89749               | 6                            |
| 5                      | TS - Pufferschürzen<br>Part set buffer skirts                                       | 149251              | 9                            |
| 6                      | Getriebebesatz 2-teilig<br>Gear set 2-parts   | 147619              | 11                           |
| 7                      | Kontakthalter m.L.<br>Contact holder with leads                                     | 137826              | 9                            |
| 8                      | Kardanwelle<br>Cardan shaft   | 146018              | 4                            |
| 9                      | Schneckendeckel<br>Worm gear cover  | 122822              | 4                            |
| 10                     | Schneckenatz mit Kardankugel<br>Set of worm gear incl. cardan ball                  | 122829              | 13                           |
| 11                     | Radsatz 1 m. Zahnrad m. 2 Hafringe<br>Wheelset 1 w.gear wheel w.2 traction tyres    | 146025              | 12                           |
| 12                     | Radsatz 4 m. Zahnrad ohne Hafring<br>Wheelset 4 w. gear wheel w/o trac.tyre         | 146023              | 11                           |
| 13                     | Zugfeder<br>Draw spring   | 86208               | 3                            |
| 14                     | Radsatz 2/3 m. Zahnrad ohne Hafringq<br>Wheelset 2/3 w.gear wheel w/o traction tyre | 146024              | 12                           |
| 15                     | TS-Dämpfer<br>Part set of silencers   | 120769              | 5                            |
| 16                     | SK - Schraube M1,6x4 mm<br>SK - Screw   | 115161              | 3                            |
| 17                     | Zahnrad Z=17 M=0,4<br>Gear wheel  | 86418               | 5                            |
| 18                     | Zahnrad Z=12 M=0,4<br>Gear wheel  | 94953               | 3                            |
| 19                     | Drehgestellblende links und rechts<br>Bogie frame left and right                    | 149178              | 12                           |
| 20                     | Schneepflug<br>Snow plow  | 122820              | 6                            |
| 21                     | TS - Kupplung<br>Part set coupling  | 130003              | 8                            |
| 22                     | Puffer eckig<br>Rectangular buffer  | 110474              | 3                            |
| 23                     | Grundrahmen<br>Basic frame  | 136913              | 16                           |
| 24                     | Getriebeboden<br>Gear bottom  | 147644              | 8                            |
| 25                     | Kanister und Pumpensatz<br>Can and pump set   | 110472              | 7                            |
| 26                     | Batteriekasten 1+2<br>Battery box   | 149307              | 6                            |
| 27                     | Schnecken Zahnrad Z=19/17<br>Worm gear wheel  | 86413               | 5                            |
| 28                     | TS - LZB Antennen<br>Part set- LZB antenna  | 123163              | 4                            |
| 29                     | Pufferbrüst<br>Buffer breast  | 130037              | 6                            |
| 30                     | Zurüstbeutel<br>Bag with accessories  | 144838              | 15                           |
| 31                     | Scheibenwischer links und rechts<br>Windscreen wiper left and right                 | 123785              | 6                            |
| 32                     | GF - Schraube M 1,6 x 4 mm<br>Self-tapping screw                                    | 114850              | 3                            |
| 33                     | Ölwanne bedruckt<br>Oil pan marked  | 135882              | 5                            |
| 34                     | Standardkupplung<br>Standard coupling   | 89246               | 6                            |
| 35                     | Oilleitung<br>Oil line  | 136442              | 3                            |
| 36                     | Rohr rechts<br>Pipe right   | 136488              | 4                            |
| 37                     | Schneckenatz mit Kardankugel<br>Set of worm gear incl. cardan ball                  | 138829              | 13                           |
| 38                     | Pufferflansch li+re<br>Buffer flange L+R  | 136487              | 5                            |
| 39                     | Pufferflansch li+re Vitrine<br>Buffer flange L+R                                    | 141162              | 4                            |
| 40                     | Schnecke<br>Wormgear  | 86702               | 6                            |
| <b>AC-Wechselstrom</b> |   |                     |                              |
| 41                     | Radsatz m. Zahnrad m. 2 Hafringe AC<br>Wheelset w.gear wheel w.2 traction tyres AC  | 146028              | 12                           |
| 42                     | Radsatz ohne Zahnrad o. Hafring AC<br>Wheelset w/o gear wheel w/o trac.tyre AC      | 146029              | 10                           |
| 43                     | Radsatz ohne Hafring mit Zahnrad AC<br>Wheelset w/o traction tyre w. gear wheel AC  | 146030              | 11                           |
| 44                     | AC-Getriebeboden<br>AC-Gear bottom  | 130040              | 8                            |
| 45                     | SK - Schraube M1,5x5 mm<br>SK - Screw   | 115317              | 4                            |
| 46                     | Schleifer 42 mm<br>Slider   | 86030               | 14                           |
| 47                     | TS - Modulisolierung<br>Part set - Module insulation                                | 200116              | 5                            |